



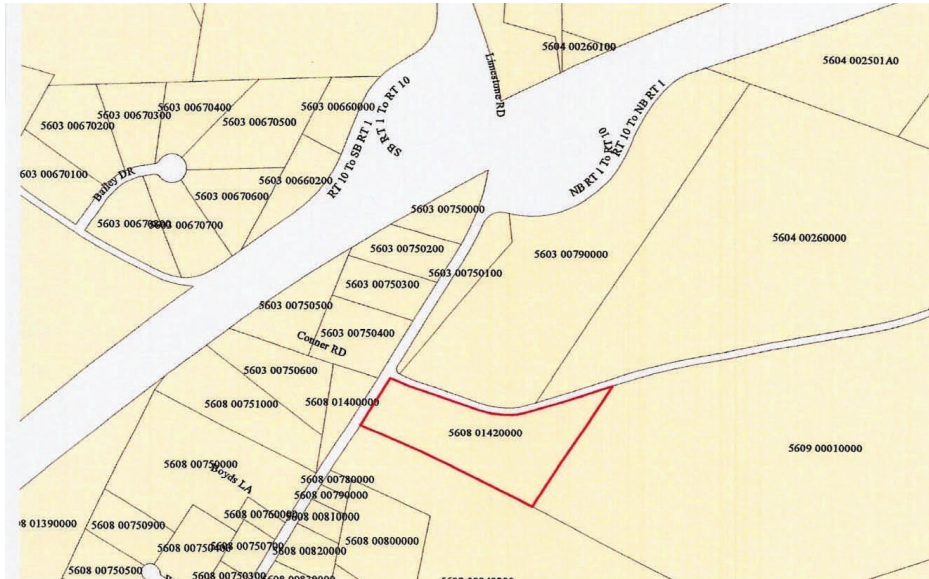
**BEILER-CAMPBELL COMMERCIAL REALTY**

OFFICE~INDUSTRIAL~FLEX~LAND~RETAIL~DEVELOPMENT~INVESTMENT

**610-444-7770**

**www.beilercampbellcommercial.com**

## 0 CONNOR ROAD



**\$1,500,000**

- PUBLIC WATER/SEWER
- C1/C2 ZONING
- TOPOGRAPHY: BELOW STREET
- DEED BOOK/PAGE: 3858/-1205
- PARCEL #56080142
- LAND USE: V-10R
- GREAT VISIBILITY
- MLS #5394770

### 0 CONNOR ROAD | OXFORD | PA | 19363

5 Acres LOCATED AT THE INTERSECTION OF LIMESTONE ROAD AND US ROUTE 1: Busy access road to the Borough of Oxford and to the New WalMart Shopping Plaza scheduled to begin construction in mid 2010. Property is zoned commercial allowing many development opportunities.

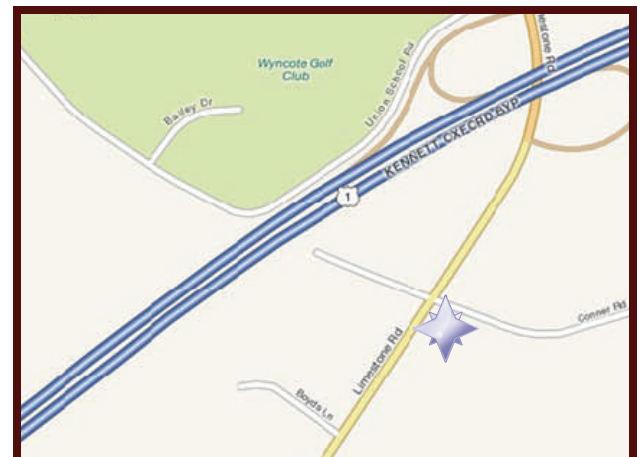
Map Grid: 8346C1



**BILL CAMP**

402 Bayard Road

Suite 100  
 Kennett Square, PA 19348  
 Phone: 610.444.7770  
 Mobile: 610.357.0681  
 Fax: 610.444.7787  
 E-mail: [billcamp@beilercampbellcommercial.com](mailto:billcamp@beilercampbellcommercial.com)



*The information above has been obtained from sources believed reliable. While we do not doubt its accuracy we have not verified it and make no guarantee, warranty or representation about it. It is your responsibility to independently confirm its accuracy and completeness. Any projections, opinions, assumptions, or estimates used are for example only and do not represent the current or future performance of the property. The value of this transaction to you depends on tax and other factors which should be evaluated by your tax, financial, and legal advisors. You and your advisors should conduct a careful, independent investigation of the property to determine to your satisfaction the suitability of the property for your needs.*